

6"/12" na.row.r™ spec sheet 90CRI

material  
2"dia smooth extruded aluminum outer housing in six lengths.

LED  
COB in 2700K, 3000K, 3500K, or 4000K 90+ cri standard rated >36,000 hours L70 (6.8K) per LM-80 test data, and 71,000 hours projected life per IES TM-21.

downlight optics  
Khatod® Cosmo 50mm dia 16mm high (RoHS compliant) available in 12° spot, 25° medium, 38° wide

driver  
constant current, class P, class 2 power unit, class A sound rating, universal input (120-277V) programmable driver, 5% minimum dimming level, PF >0.90. protections include short circuit, input/output isolation and surge protection (3KV). wired for 0-10v dimming from factory.

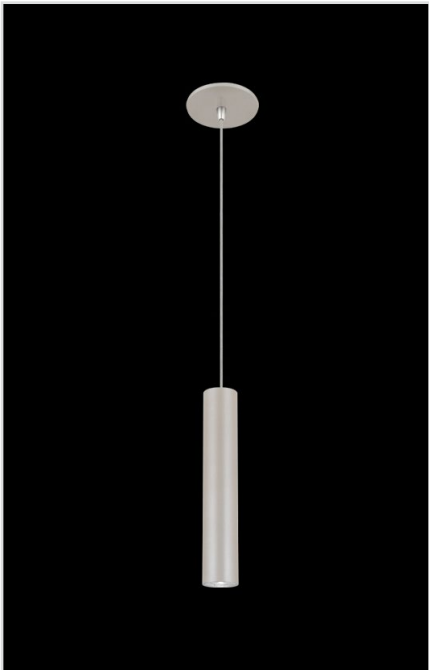
mounting  
standard  
driver in junction box (requires 2 1/8" deep electrical box). 5" dia canopy painted to match fixture. cloth-covered power cord color options listed below. cloth cord requires special stripping tool (link). field-adjustable 3ft length. optional stem listed below, painted to match fixture. satin black canopy standard on wood finishes.

canopy mounted driver (CDVR) (optional)  
2"dia x 6"h extruded aluminum driver housing on 5" dia canopy painted to match fixture. field-adjustable 3ft length. optional stem listed below, painted to match fixture.

remote enclosure (.LV) (optional)  
the standard driver can be remote mounted up to 33ft from the LED. suspension length should be considered in distance. remote enclosure supplied. for distances greater than 33ft consult factory. for Chicago Plenum installation consult factory.

finish  
select from 15 standard powder coat paint finishes or 3 wood finishes (listed below) or specify RAL# for custom colors.

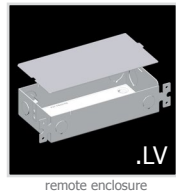
emergency  
if required, recommend use of inverter (by other).



catalog number

--	--	--	--	--	--	--

size	beam	CCT	lumens	painted finish	power cord	options
P3906 driver in j-box	S 12° spot	27 2700K	L1 360 lm	AP anodized paint	BUPC blue cloth cord	3FT 36" cord
P3906.BABA driver in j-box	M 25° med	30 3000K	L2 630 lm	BS brass	ORPC orange cloth cord	STM1 12" stem
P3906.LV remote enclosure 2"dia X 6"ht	W 38° wide	35 3500K	L3 900 lm	BU blue	PLPC purple cloth cord	STM2 24" stem
P3912 driver in j-box		40 4000K	H1 1265 lm	BZ bronze	RDPC red cloth cord	STM3 36" stem
P3912.BABA driver in j-box			H2 1805 lm	CP champagne	WGPC white & gray dot cloth cord	CDVR canopy mounted driver
P3912.LV remote enclosure 2"dia X 12"ht				FB flat black	WHPC white cord	
				GM gun metal	BKPC black cord	
				MB military blue	SBPC silver braid cord	
				MW matte white		
				OR orange		
				RD red		
				SB satin black		
				SS satin silver		
				TG textured gray		
				YO yellow		



premium finish  
RAL specify RAL#

wood finish  
ASH ashwood  
ENG english brown oak  
ESP espresso

This product meets the guidelines for the Build America, Buy America Act. Some Exclusions Apply. For more information and full list of eligible SKUs, please contact the factory at info@impactltg.com



job name:

type:

36"/48" na.row.r™ spec sheet 90CRI

material  
2"dia smooth extruded aluminum outer housing in six lengths.

LED  
COB in 2700K, 3000K, 3500K, or 4000K 90+ cri standard rated >36,000 hours L70 (6.8K) per LM-80 test data, and 71,000 hours projected life per IES TM-21.

downlight optics  
Khatod® Cosmo 50mm dia 16mm high (RoHS compliant) available in 12° spot, 25° medium, 38° wide

driver  
constant current, class P, class 2 power unit, class A sound rating, universal input (120-277V) programmable driver, 5% minimum dimming level, PF >0.90. protections include short circuit, input/output isolation and surge protection (3KV). wired for 0-10v dimming from factory.

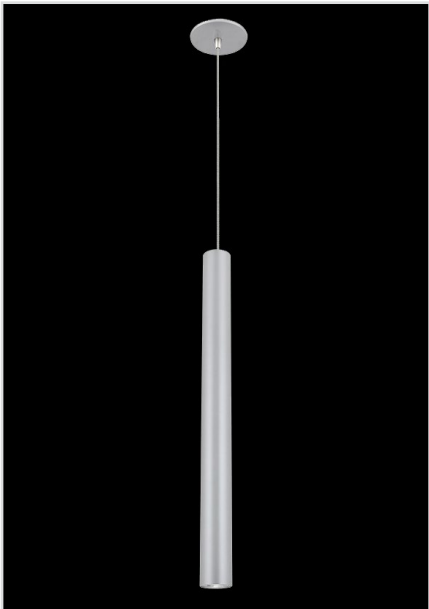
mounting  
standard  
driver in junction box (requires 2 1/8" deep electrical box). 5" dia canopy painted to match fixture. cloth-covered power cord color options listed below. cloth cord requires special stripping tool (link). field-adjustable 3ft length. optional stem listed below, painted to match fixture. satin black canopy standard on wood finishes.

canopy mounted driver (CDVR) (optional)  
2"dia x 6"h extruded aluminum driver housing on 5" dia canopy painted to match fixture. field-adjustable 3ft length. optional stem listed below, painted to match fixture.

remote enclosure (.LV) (optional)  
the standard driver can be remote mounted up to 33ft from the LED. suspension length should be considered in distance. remote enclosure supplied. for distances greater than 33ft consult factory. for Chicago Plenum installation consult factory.

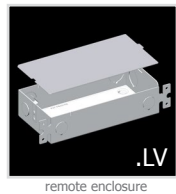
finish  
select from 15 standard powder coat paint finishes or 3 wood finishes (listed below) or specify RAL# for custom colors.

emergency  
if required, recommend use of inverter (by other).



catalog number

size	beam	CCT	lumens	painted finish	power cord	options
P3936* driver in j-box	S 12° spot	27 2700K	L1 360 lm	AP anodized paint	BUPC blue cloth cord	3FT 36" cord
P3936.BABA* driver in j-box	M 25° med	30 3000K	L2 630 lm	BS brass	ORPC orange cloth cord	STM1 12" stem
P3936.LV* remote enclosure	W 38° wide	35 3500K	L3 900 lm	BU blue	PLPC purple cloth cord	STM2 24" stem
P3936.LV.BABA* remote enclosure		40 4000K	H1 1265 lm	BZ bronze	RDPC red cloth cord	STM3 36" stem
			H2 1805 lm	CP champagne	WGPC white & gray dot cloth cord	CDVR canopy mounted driver
P3948* driver in j-box				FB flat black	WHPC white cord	
P3948.BABA* driver in j-box				GM gun metal	BKPC black cord	
P3948.LV* remote enclosure				MB military blue	SBPC silver braid cord	
P3948.LV.BABA* remote enclosure				MW matte white		
				OR orange		
				RD red		
				SB satin black		
				SS satin silver		
				TG textured gray		
				YO yellow		



premium finish  
RAL specify RAL#

wood finish  
ASH ashwood  
ENG english brown oak  
ESP espresso

This product meets the guidelines for the Build America, Buy America Act. Some Exclusions Apply. For more information and full list of eligible SKUs, please contact the factory at info@impactltg.com

standard  
mounting  
2 1/8" deep  
J-Box required

driver

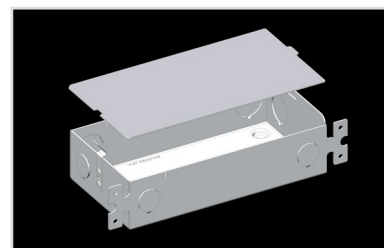
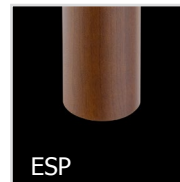
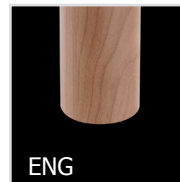
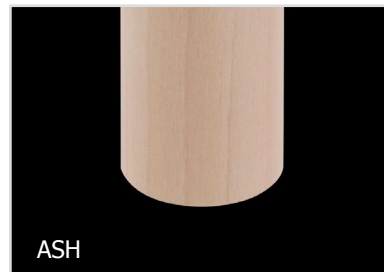
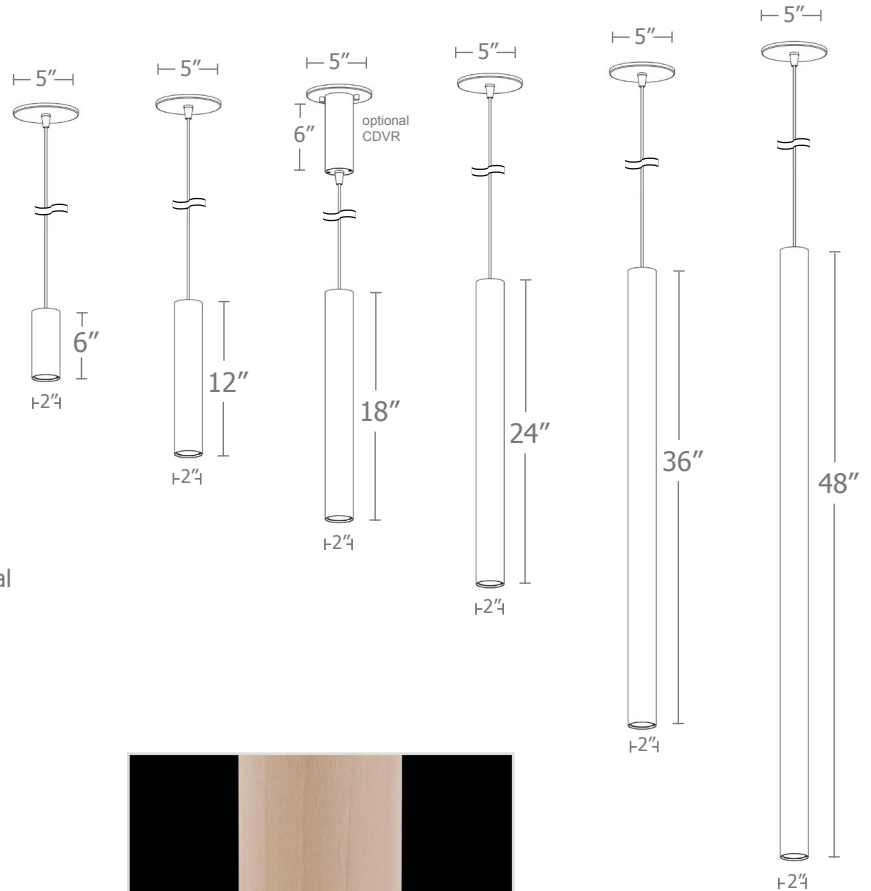
optional  
CDVR  
6"

silver braid  
power cord

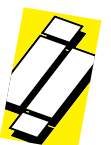
housing

COB

downlight  
optics



impactltg



# Calculation Table

Consult factory for applications assistance

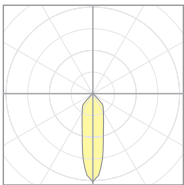


Cat No	Delivered* Lumens	Watts 120V / 277V	IES File #		LLF to be applied
L1	360	3	07222C	spot	.30
			07222B	med	.30
			07222A	wide	.30
L2	630	6	07222C	spot	.53
			07222B	med	.53
			07222A	wide	.53
L3	900	9	07222C	spot	.76
			07222B	med	.76
			07222A	wide	.76
H1	1265	13	07222C	spot	1.07
			07222B	med	1.07
			07222A	wide	1.07
H2	1805	19	07222C	spot	1.52
			07222B	med	1.52
			07222A	wide	1.52

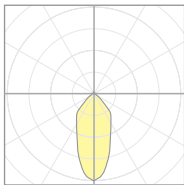
\*delivered lumens based on 4000K, 90+ cri

The application of a Light Loss Factor is required to:

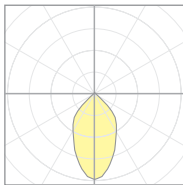
- match the lumen output for the power module specified
- incorporate the increased lumen output due to LED/Driver upgrades



07222C  
P39xx-S-40H1  
S 12° spot

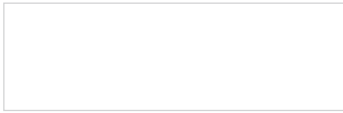


07222B  
P39xx-M-40H1  
M 25° med



07222A  
P39xx-W-40H1  
W 38° wide

## Powder Coat Paint Finishes



**MW** matte white



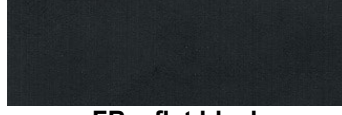
**AP** anodized paint



**SS** satin silver



**TG** textured gray



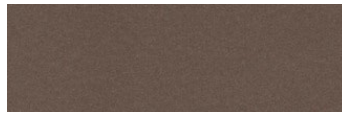
**FB** flat black



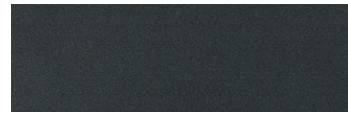
**SB** satin black



**CP** champagne



**BZ** bronze



**GM** gun metal



**OR** orange 2011



**BU** blue 5017



**BS** brass



**RD** red 3020



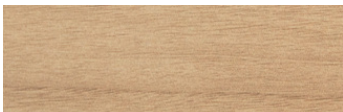
**YO** yellow 1018



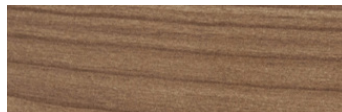
**MB** military blue

## Premium Finishes\*

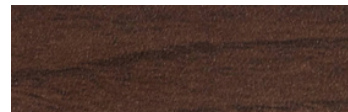
### Wood Finishes



**ASH** ashwood



**ENG** english brown oak



**ESP** espresso

For accurate color verification, actual finish samples are available upon request.



**RAL#**

\*Available on select series. Consult product submittal for availability.

